

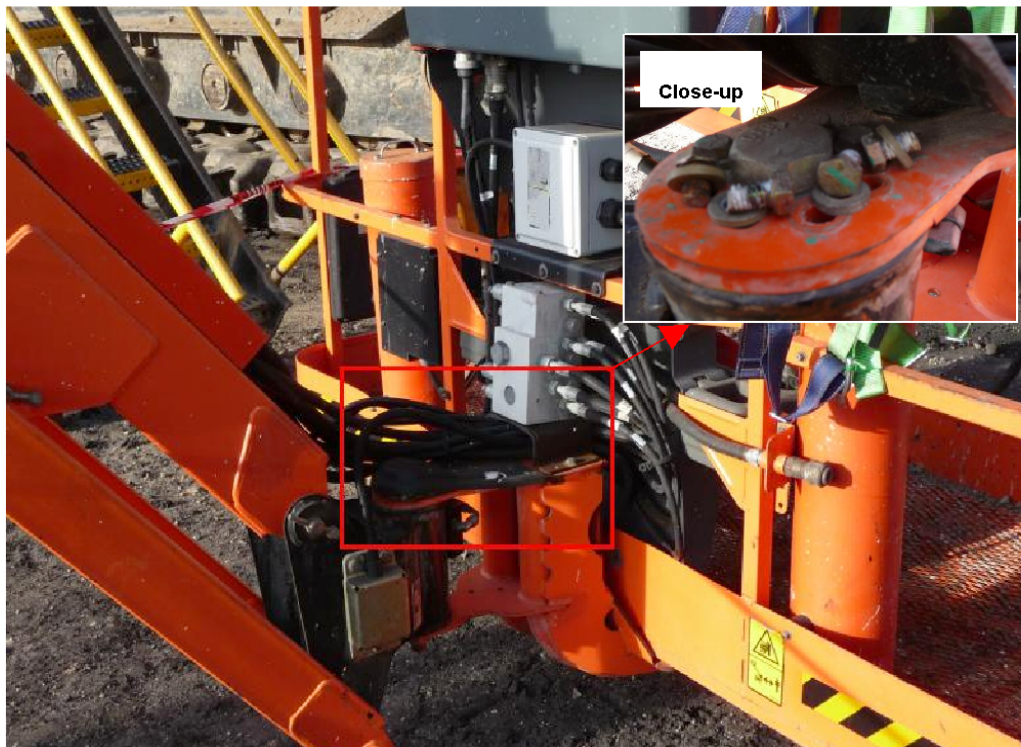
BMA Peak Downs Mine

Released: 23 February 2010

Broken Bolts in EWP Basket Rotator Assembly

Event Description:

On the 23rd January 2010 at approx. 17:30hrs at the Peak Downs mine site, a tradesperson was conducting an informal inspection of the swivel section of a hired Elevated Work Platform (EWP) (Model JLG 860 SJ), when it was identified that four 3/8" bolts had sheared off from the basket slew mechanism. The remaining four bolts were identified as being loose. The EWP had been in use for approximately 1-2 hours prior to the identification of this hazard. Bolts showed evidence of having failed before EWP had started operation onsite.



Investigation Findings and Learning's:

The investigation identified that although these bolts have failed as per design, which is to absorb impact or overload of the man-basket, the ability of an operator to conduct a prestart inspection which identifies their failure is greatly inhibited by the plastic cover which sits over the top and contains the bolts once they have sheared. The following learning's have been taken from the review of this hazard:

- When reviewing equipment for site compliance ensure visual inspection points required for prestart checklists are visually inspectable without the removal of covers to detect non-compliances
- Maintain Vigilance with all machinery inspections
- Communication of learning's from previous incidents can prevent re-occurrence

For further information please contact Eric Girgenti, PDM Field Maintenance, 0438942604