

A white and red JLG Ultra Boom scissor lift is shown extending upwards from the bottom left towards the center of the frame. The lift's platform is positioned near the JLG logo. The background is a solid orange color with a large, glowing white pentagon shape on the right side.

JLG[®]
reachingout

E3 Scissor Platform Control Measures

October, 2012

2.6.4 Work platform controls: Location, accessibility, protection

Control devices shall be situated on the work platform and shall be readily accessible to the operator. Platform control boxes not permanently attached shall have their normal location and orientation clearly marked on the platform and the control box.

When released, all control devices shall automatically return to the 'off' or 'neutral' position, if used to control any movement of the MEWP.

All control devices shall be protected against activation other than that initiated by the operator.

NOTE: A separate control, which has to be continuously activated by the operator in order for any motion to take place, meets this requirement.

Where a separate control is integral with a motion control, the control shall be mechanically protected against inadvertent actuation.

A guard shall be provided and located at least 50 mm above the highest point of the controls.

2.6.5 Duplicate controls: Location, accessibility, protection and selection

Duplicate controls for all powered functions that are necessary to retrieve the platform in an emergency shall be provided at the base or ground level, and shall override control devices situated on the work platform.

2.6.10 Overriding emergency system

Overriding of the platform emergency stop control and load-sensing system is allowed for rescuing a trapped or incapacitated operator on the platform. Overriding is permitted only by the use of a safety device that is independent from the selection control device. The safety device shall be operated by hold to run controls.

The overriding of the load-sensing system shall allow motion of the platform sufficient to rescue the operator. Features shall be provided to protect against misuse of the overriding system.

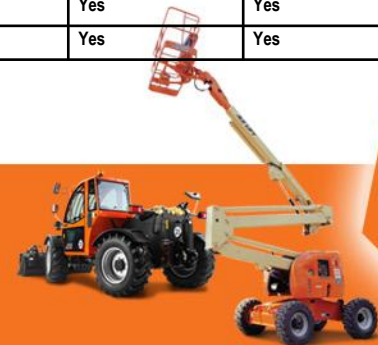
Refer to the JLG operating manual for the Scissorlift .

Download operators manuals from:

www.jlg.com.au >Product Manuals>JLG > JLG Scissorlifts>



Control measure	1530E3	1932E3	2033E3	2046E3	2646E3	2658E3
Platform Emergency Stop switch, RED	Yes	Yes	Yes	Yes	Yes	Yes
Mechanical guarding at controls	Yes	Yes	Yes	Yes	Yes	Yes
Controls >50mm below the guard rails	Yes	Yes	Yes	Yes	Yes	Yes
Trigger switch as enable switch	Yes	Yes	Yes	Yes	Yes	Yes
Inactivity Timer on trigger switch	Yes, 3 seconds	Yes, 3 seconds	Yes, 3 seconds	Yes, 3 seconds	Yes, 3 seconds	Yes, 3 seconds
Interlock to prevent operation if joystick or switch activated before release of RED emergency stop switch	Yes	Yes	Yes	Yes	Yes	Yes
Proportional lift	Yes	Yes	Yes	Yes	Yes	Yes
Proportional drive	Yes	Yes	Yes	Yes	Yes	Yes
Start-up system test'.	Yes	Yes	Yes	Yes	Yes	Yes
Lift/drive Function selector switch, momentary or maintained.	Momentary 3 sec timeout	Momentary 3 sec timeout	Momentary 3 sec timeout	Momentary 3 sec timeout	Momentary 3 sec timeout	Momentary 3 sec timeout
Outdoor use Permitted	Yes, 1 person	Yes 1 person	Yes, 1 person	Yes, 2 person	Yes 2 person	Yes 2 person
Level sensor	Yes, 1.5 x 1.5 stowed	Yes, 1.5 x 1.5 stowed	Yes, 1.5 x 1.5 stowed	Yes, 2 x 2 stowed	Yes, 2 x 2 stowed	Yes, 2 x 2 stowed
Out of Level Sensor cutout	Lift and elevated drive	Lift and elevated drive	Lift and elevated drive	Lift and elevated drive	Lift and elevated drive	Lift and elevated drive
Side slope level sensor setting at full elevation	1.5 degree	1.5 degree	1.5 degree	2 degree	2 degree	2 degree
Pothole protection system	Prevents elevated drive only	Prevents elevated drive only	Prevents elevated drive only	Prevents elevated drive only	Prevents elevated drive only	Prevents elevated drive only
Ground controls override the platform controls in emergency	Yes.	Yes	Yes	Yes	Yes	Yes
Manual bleed down valve at base	Yes, pull cable	Yes, pull cable	Yes, pull cable	Yes, pull cable	Yes, pull cable	Yes, pull cable
Motion Alarm	Yes	Yes	Yes	Yes	Yes	Yes
Strobe light at base	Yes	Yes	Yes	Yes	Yes	Yes



JLG E3 Series Scissor lift 1532E3,1932E3, 2033E3, 2046E3, 2646E3, 2658E3

Mechanical protection:

Joystick controller protected by external metal guard over the control box.

Platform control Box mounted on front rail.

Control System:

Red Emergency switch shuts down all platform functions.

Drive and lift **momentary** selector switch allows either drive or lift. Operator to select. Times out after 3 seconds.

Joystick activation without the trigger switch will prevent movement.

Trigger switch times out after 3 second inactivity to prevent misuse.

Joystick proportional function requires trigger switch to be activated before moving joystick.



JLG
reachingout

JLG E3 Scissor with Proportional platform control system and mechanical guarding.



JLG
reachingout

JLG SMART System Multiplex Control Unit.

- **E3 Scissor all sizes scissors function, and 3246E2 with Proportional motor control**
- The JLG designed **SMART System™** is a 24 Volt **multiplex motor control unit** installed on the electric scissor lift models 1532E3, 1932E3, 2033E3, 2046E3, 2646E3 and 2658E3.
- **Emergency Stop Switch - A two-position, red, mushroom-shaped emergency stop switch** functions to provide power to the platform control station and also to turn off power to the platform function controls in the event of an emergency. With the power selector switch positioned to platform, power is turned on by pulling the switch out (on), and is turned off by pushing the switch in (off). Turning the emergency stop switch off and then on again will reset the smart system if a system fault has occurred and the machine has shut down.
- **Lift Switch - The lift switch, when used in conjunction** with the joystick, provides for raising and lowering the platform. Lift is activated by pressing the lift switch and moving the joystick forward (lift up) or backward (lift down). Lift up speed is determined by the distance the joystick is moved forward. Lift down speed is non-adjustable, and lift down is attained by moving the joystick fully backward. The lift switch is part of the enable circuit, which provides power to the joystick and the lift function for 3 seconds when the lift switch is pressed. **If the joystick is not activated within 3 seconds, the lift switch must be pressed again before activating the joystick.** When the joystick is returned to the center off position, the operator has 3 seconds to re-activate the joystick or select another function before power is removed by the enable circuit. Do not try to operate the drive, lift, and powered deck extension functions simultaneously. If the drive, lift, and powered deck extension functions are selected simultaneously, no function will operate. If this occurs, pause, then press only one of the function switches to activate the function.
- **Drive Switch - The drive switch, when used in conjunction** with the joystick, provides for driving the machine in forward or reverse. Drive is activated by pressing the drive switch, in conjunction with the trigger switch, and moving the joystick forward (forward) or backward (reverse). Drive speed is determined by the distance the joystick is moved forward or backward. Increased drive speed is possible when the high drive speed switch is pressed either simultaneously with the drive switch or while operating the drive function. The drive switch is part of the enable circuit, which provides power to the joystick and the drive function for 3 seconds when the drive switch is pressed. **If the joystick is not activated within 3 seconds, the drive switch must be pressed again before activating the joystick. When the joystick is returned to the center off position, the operator has 3 seconds to re-activate the joystick or select another function before power is removed by the enable circuit.** In addition, the posi-trac switch can be engaged while operating the drive function to give a more evenly distributed oil flow to each drive motor.

