

## Elevated Work Platform (EWP) alert.

An incident occurred on an Australand site in late August involving an Elevated Work Platform (EWP) scissor lift. The EWP suddenly lurched to one corner resulting in the machine stopping on a dangerous tilt. Fortunately the EWP did not fall, and no workers were injured.

Photo1. Aug 09 incident



The EWP was extended approximately 11m. The task being undertaken at the time was stapling roof safety mesh prior to roof sheets being laid. One (1) worker was in the EWP at the time. The worker was immediately retrieved from the EWP platform using other plant available on site. The plant supplier and WHSQ were immediately notified.

The plant involved is a **Geni GS 4390**. At first it was determined the incident was caused by a defective oscillate limit switch. However further advice from Genie technicians suggest the cause to be the 'oscillate wiring at the directional valves on the oscillate manifold had been reversed.'

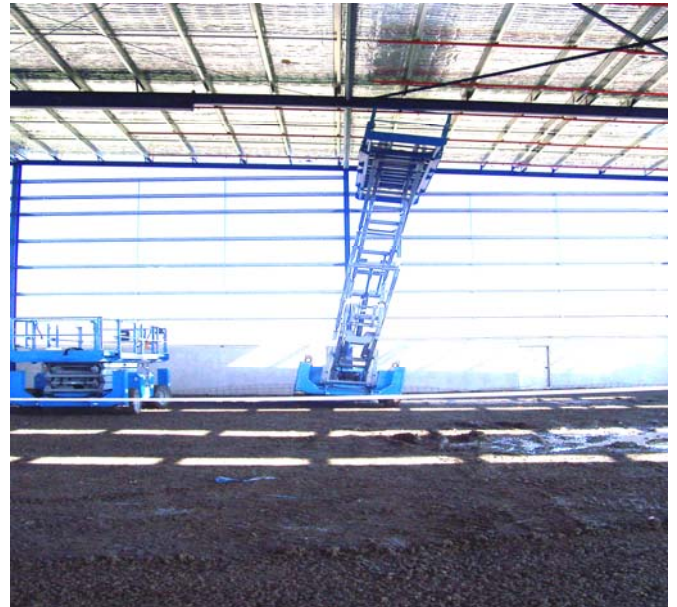
This fault resulted in one of the EWP wheels retracting in an uncontrolled fashion and the EWP lurching to one side (see photos 1 & 2)

This finding is of particular concern as the cause of this incident appears to be similar to the cause of a similar incident on an Australand site in Victoria in 2006. The EWP involved in the 2006 incident was also a **Geni GS 4390**. (see photo 3)

Photo2. Wheel retraction



Photo3. Aug 06 incident on Victorian site involving same make and model EWP.



Geni Australia has been asked by Australand to advise what corrective they intend to implement as a result of these incidents. Further, Genie has been asked to inspect and certify this fault does not exist or has been rectified on all Geni EWPs on our sites.

### Recommendation

Until this advice is received the following action must be taken. **Geni GS 4390** EWPs can only be moved from a stationary position with the work platform in the stowed (lowered) position.

Note: Workplace Health & Safety Queensland has been fully briefed on both these incidents, and WHSQ is carrying out its own enquiries.