

Workplace Health and Safety Queensland  
Elevating Work Platform Tyres

12/3/2014

**Issue**

Tyre damage on elevating work platforms is a common occurrence. As tyres on EWP's are either solid or polyurethane foam filled, damage to the tyre may not be as critical as would be the case with a pneumatic (air filled) tyre. This document highlights reasonable benchmarks for tyres on EWP's.

**Guidance**

Tyre discard benchmarks specified by two major EWP manufacturers are as follows:

**“Solid tyres:** If a cut, tear, chunk, or other discrepancy exceeds any one or more of the following dimensions: 76 mm long or 19 mm wide or 19 mm deep. Also, if the metal wheel is visible at any point through the tread area of the tire.

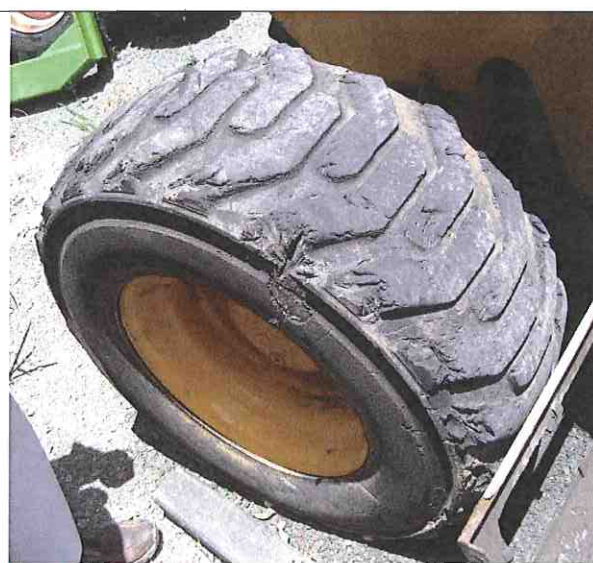
**Polyurethane foam filled tyres:** Smooth, even cut through the cord plies which exceeds 76 mm in total length; Tears or rips (ragged edges) in the cord plies which exceeds 25 mm in any direction; Punctures which exceed 25 mm in diameter. Also damage to the bead area cords of the tyre.”

It should be noted that this document is a guide. Where the tyre condition is questionable Workplace Health and Safety Queensland may request written confirmation that the tyre is acceptable from a competent person (i.e. the EWP manufacturer or representative).

**UNACCEPTABLE TYRE CONDITION – EWP SHOULD NOT BE USED**



**UNACCEPTABLE** - Severe side wall damage – foam filled tyre



**UNACCEPTABLE** - Severe side wall and tread damage – foam filled tyre



**UNACCEPTABLE** - Severe tread damage – complete lug can be peeled away



**UNACCEPTABLE** - Severe tread wear



**UNACCEPTABLE** - Bead damage.



**UNACCEPTABLE** – Severe side wall damage

**TYRE CONDITION SATISFACTORY – EWP CAN CONTINUE TO OPERATE**



**Bolt in tyre –this is not a fault - bolt is used to plug the air hole after filling.**



**Non-critical - Small amount of tread missing but outer case is not damaged.**





**Non-critical - Small amount of tread missing**



**Non-critical - Small amount of tread damage and minor wear**

This guidance paper will be revised on 1 January 2015 or before.

A handwritten signature in purple ink that reads "Stuart Davis". The signature is written in a cursive, flowing style.

Stuart Davis  
Principal Adviser (Construction Engineering)  
Workplace Health and Safety Queensland