

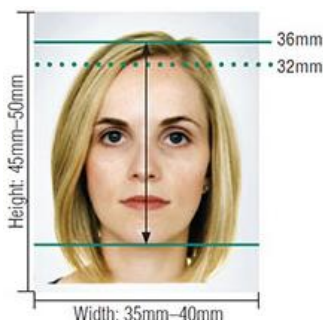
Photo Identification on the EWPA Yellow Card

The latest EWPA Yellow cards are issued with a 5-year expiry and photo identification. It is important that the photo is a true representation of the card holder, therefore we have provided the following guidelines to ensure the photo identification is accepted by the EWPA

Yellow Card Photo Guidelines

- Photos must be good quality in colour and bright enough to print on cards.
- Clear focussed image with no marks or 'red eye'.
- Face looking directly at camera with eyes open.
- Don't smile, but have a neutral expression on your face, with your mouth closed.
- No shadows cast on the face. Ensure hair isn't covering the face, particularly your eyes.
- No sunglasses or hats - Head coverings worn for cultural or religious reasons may be worn but must be adjusted so that the whole face is visible.
- No use of snap chat filters, photoshopping or other digital manipulations that change the physical appearance of the operator.
- Original photo (or selfie) not a photo of a photo or passport.
- Clothing must be worn, preferably not hi-vis.

Photos should follow the Australian passport photo guidelines as per the image below



Examples of photos that will not be accepted

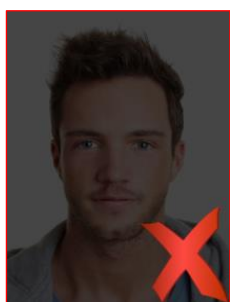


Photo must not be too dark



Hair must not cover face



No shadows on face



Background should be plain white



Hat must not be worn

For best quality photos

- Use a plain background
- Try not to capture anyone else in the background
- Remove high vis vests with reflective material
- Minimise shadows from bright sunlight
- Take a second to look at the photo before saving and submitting
- If it doesn't look right, simply line them up again and hit **the Retake Photo button**